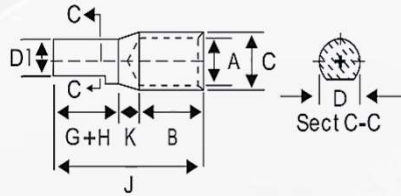


U-LUG

Uninsulated Copper Solid Pin Terminal Ends



Copper Reducer Pin Type Terminal Ends

- Material : Copper Tube
- Specification : E.C. Grade 99.25% IACS
- Finish : Electro Tinned

CABLE SIZE (MMSQ)	(EQUIVALENT AREA AWG)	Product Code	DIMENSION (mm)							
			A	C	D	D1	B	K	G+H	J
120	4/0 AWG	HPC - 35	14.8	17.8	11.5	10.5	22.0	6.0	32.0	60.0
150	300 MCM	HPC - 37	16.0	19.6	11.5	10.5	26.0	6.0	32.0	64.0
185	350 MCM	HPC - 38	18.0	22.0	11.5	10.5	32.0	6.0	32.0	70.0
240	450 MCM	HPC - 44	22.0	26.0	16.0	15.0	38.0	8.0	42.0	88.0
300	600 MCM	HPC - 45	24.0	28.7	16.0	15.0	42.0	8.0	42.0	92.0