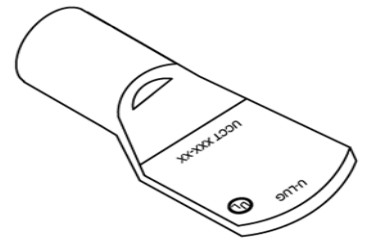


# U-LUG

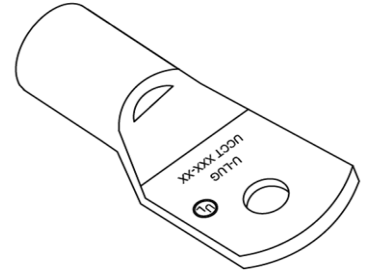
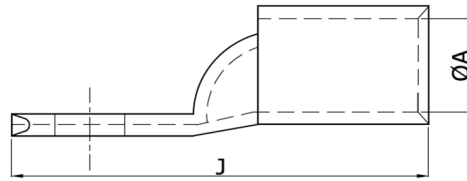
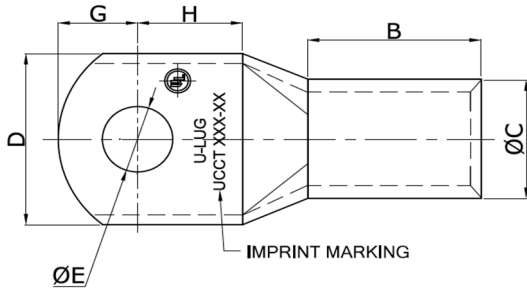


## CABLE LUG - SINGLE HOLE

- 1) WITH INSPECTION HOLE
- 2) FINISH = ELECTRO TINNED
- 3) MATERIAL : E-COPPER



FOR BLANK LUG (-MB)



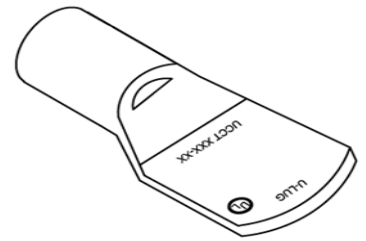
CABLE SIZE		U-LUG PART NO.	STUD HOLE SIZE	DIMENSIONS						
(mm)	(EQUIVALENT AREA AWG / MCM)		E (mm)	A (mm)	C (mm)	D (mm)	G (mm)	H (mm)	B (mm)	J (mm)
1.5	16 AWG	UCCT 1.5-3	3.2	1.8	3.7	8.0	4.0	5.0	6.0	17.0
		UCCT 1.5-4	4.2	1.8	3.7	8.0	4.0	5.0	6.0	17.0
		UCCT 1.5-5	5.2	1.8	3.7	8.0	4.0	5.0	6.0	17.0
		UCCT 1.5-6	6.5	1.8	3.7	10.0	4.0	6.0	6.0	18.0
2.5	14 AWG	UCCT 2.5-3	3.2	2.4	4.0	8.0	4.0	5.0	8.0	19.0
		UCCT 2.5-4	4.2	2.4	4.0	8.0	4.0	5.0	8.0	19.0
		UCCT 2.5-5	5.2	2.4	4.0	8.0	4.0	5.0	8.0	19.0
		UCCT 2.5-6	6.5	2.4	4.0	10.0	5.0	6.0	8.0	21.0
		UCCT 2.5-8	8.4	2.4	4.0	12.0	6.0	9.0	8.0	26.0
4	12 AWG	UCCT 2.5-10	10.5	2.4	4.0	17.0	9.0	12.0	10.0	36.0
		UCCT 4-4	4.2	3.1	4.8	10.0	5.0	6.0	8.0	21.0
		UCCT 4-5	5.2	3.1	4.8	10.0	5.0	6.0	8.0	21.0
		UCCT 4-6	6.5	3.1	4.8	10.0	5.0	6.0	8.0	21.0
		UCCT 4-8	8.4	3.1	4.8	12.0	6.0	9.0	8.0	26.0
6	10 AWG	UCCT 4-10	10.5	3.1	4.8	15.0	8.0	11.0	9.0	30.0
		UCCT 6-4	4.2	3.8	5.5	10.0	5.0	6.0	10.0	24.0
		UCCT 6-5	5.2	3.8	5.5	10.0	5.0	6.0	10.0	24.0
		UCCT 6-6	6.5	3.8	5.5	10.0	5.0	6.0	10.0	24.0
		UCCT 6-8	8.4	3.8	5.5	12.0	6.0	9.0	10.0	28.0
		UCCT 6-10	10.5	3.8	5.5	15.0	8.0	11.0	10.0	32.0
10	8 AWG	UCCT 6-12	13.0	5.5	7.6	17.0	11.0	13.0	12.0	39.0
		UCCT 10-6	6.5	4.5	6.2	11.0	6.0	7.0	10.0	26.0
		UCCT 10-8	8.4	4.5	6.2	12.0	6.0	9.0	10.0	28.0
		UCCT 10-10	10.5	4.5	6.8	15.0	8.0	11.0	11.0	33.0
16	6 AWG	UCCT 10-12	13.0	4.5	6.8	18.0	9.0	11.0	11.0	36.0
		UCCT 16-6	6.5	5.4	7.1	12.0	7.0	7.0	12.0	30.0
		UCCT 16-8	8.4	5.4	7.1	12.0	7.0	7.0	12.0	30.0
		UCCT 16-10	10.5	5.4	7.6	15.0	8.0	12.0	12.0	36.0
25	4 AWG	UCCT 16-12	13.0	5.4	7.6	17.0	11.0	13.0	12.0	39.0
		UCCT 25-6	6.5	6.8	8.8	13.0	7.0	7.0	12.0	30.0
		UCCT 25-8	8.4	6.8	8.8	13.0	7.0	7.0	12.0	30.0
		UCCT 25-10	10.5	6.8	8.8	15.0	9.0	9.0	13.0	36.0
35	2 AWG	UCCT 25-12	13.0	6.8	9.2	17.0	10.0	12.0	15.0	41.0
		UCCT 35-6	6.5	8.2	10.6	15.3	9.0	9.0	13.5	37.0
		UCCT 35-8	8.4	8.2	10.6	15.3	9.0	9.0	13.5	37.0
		UCCT 35-10	10.5	8.2	10.6	15.3	9.0	9.0	13.5	37.0
		UCCT 35-12	13.0	8.2	10.6	18.0	10.0	12.0	13.5	41.0

# U-LUG

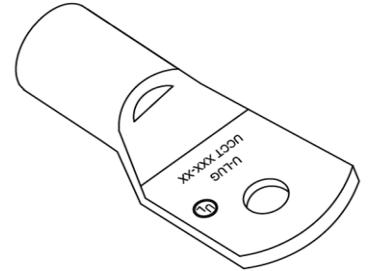
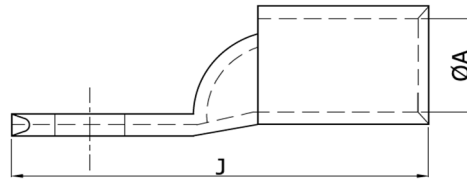
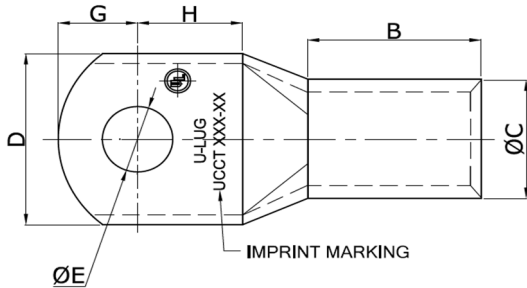


## CABLE LUG - SINGLE HOLE

- 1) WITH INSPECTION HOLE
- 2) FINISH = ELECTRO TINNED
- 3) MATERIAL : E-COPPER



FOR BLANK LUG (-MB)



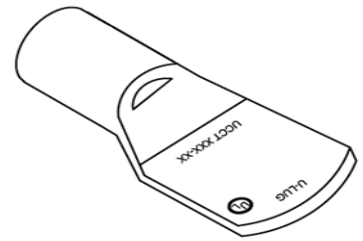
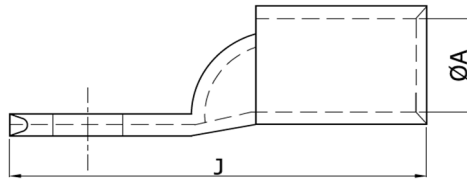
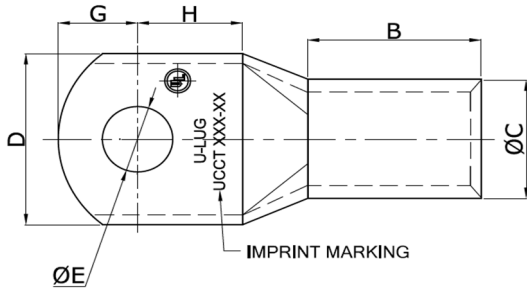
CABLE SIZE		U-LUG PART NO.	STUD HOLE SIZE	DIMENSIONS						
( mm )	(EQUIVALENT AREA AWG / MCM )		E ( mm )	A ( mm )	C ( mm )	D ( mm )	G ( mm )	H ( mm )	B ( mm )	J ( mm )
50	1/0 AWG	* UCCT 50-8 NP	8.4	9.5	12.4	15.0 NP	9.0	12.0	17.0	41.0
		UCCT 50-8	8.4	9.5	12.4	17.8	9.0	10.0	17.0	41.0
		UCCT 50-10	10.5	9.5	12.4	17.8	9.0	10.0	17.0	41.0
		UCCT 50-12	13.0	9.5	12.4	20.0	10.0	12.0	17.0	45.0
70	2/0 AWG	* UCCT 70-8 NP	8.4	11.3	14.6	16.0 NP	9.0	16.0	18.5	47.0
		UCCT 70-8	8.4	11.3	14.6	21.0	11.0	12.0	18.5	47.0
		UCCT 70-10	10.5	11.3	14.6	21.0	11.0	12.0	18.5	47.0
		UCCT 70-12	13.0	11.3	14.6	21.0	11.0	12.0	18.5	47.0
		UCCT 70-16	17.0	11.3	14.6	26.0	14.0	16.0	18.5	56.0
95	3/0 AWG	* UCCT 95-8 NP	8.4	13.5	17.4	20.0 NP	10.0	16.0	21.0	53.0
		UCCT 95-8	8.4	13.5	17.4	25.0	12.0	13.0	21.0	53.0
		UCCT 95-10	10.5	13.5	17.4	25.0	12.0	13.0	21.0	53.0
		UCCT 95-12	13.0	13.5	17.4	25.0	12.0	13.0	21.0	53.0
		UCCT 95-16	17.0	13.5	17.4	25.0	14.0	16.0	22.0	59.0
120	4/0 AWG	* UCCT 120-8 NP	8.4	15.0	19.4	22.0 NP	10.0	18.0	22.0	60.0
		* UCCT 120-10 NP	10.5	15.0	19.4	22.0 NP	10.0	18.0	22.0	60.0
		UCCT 120-10	10.5	15.0	19.4	28.0	13.0	14.0	23.0	60.0
		UCCT 120-12	13.0	15.0	19.4	28.0	13.0	14.0	23.0	60.0
		UCCT 120-16	17.0	15.0	19.4	28.0	16.0	16.0	23.0	65.0
150	300 MCM	UCCT 150-8	8.4	16.5	21.2	30.0	16.0	16.0	27.0	70.0
		* UCCT 150-8 NP	8.4	16.5	21.2	22.0 NP	10.0	22.0	27.0	70.0
		* UCCT 150-10 NP	10.5	16.5	21.2	22.0 NP	10.0	22.0	27.0	70.0
		UCCT 150-10	10.5	16.5	21.2	30.0	16.0	16.0	27.0	70.0
		UCCT 150-12	13.0	16.5	21.2	30.0	16.0	16.0	27.0	70.0
		UCCT 150-16	17.0	16.5	21.2	30.0	16.0	16.0	27.0	70.0
185	350 MCM	UCCT 185-10	10.5	18.5	23.5	34.0	17.0	19.0	32.0	80.0
		* UCCT 185-10 NP	10.5	18.5	23.5	24.0 NP	12.0	24.0	32.0	80.0
		UCCT 185-12	13.0	18.5	23.5	34.0	17.0	19.0	32.0	80.0
		UCCT 185-16	17.0	18.5	23.5	34.0	17.0	19.0	32.0	80.0
240	450 MCM	UCCT 240-MB	BLANK	21.0	26.5	38.0	20.0	21.0	39.0	94.0
		UCCT 240-10	10.5	21.0	26.5	38.0	20.0	21.0	39.0	94.0
		* UCCT 240-12 NP	13.0	21.0	26.5	30.0 NP	16.0	25.0	39.0	94.0
		UCCT 240-12	13.0	21.0	26.5	38.0	20.0	21.0	39.0	94.0
		UCCT 240-16	17.0	21.0	26.5	38.0	20.0	21.0	39.0	94.0
		UCCT 240-20	21.0	21.0	26.5	38.0	20.0	21.0	39.0	94.0

# U-LUG

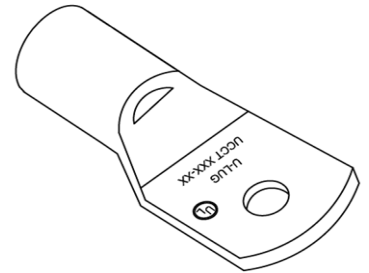


## CABLE LUG - SINGLE HOLE

- 1) WITH INSPECTION HOLE
- 2) FINISH = ELECTRO TINNED
- 3) MATERIAL : E-COPPER



FOR BLANK LUG (-MB)



CABLE SIZE		U-LUG PART NO.	STUD HOLE SIZE	DIMENSIONS						
( mm )	(EQUIVALENT AREA AWG / MCM )		E ( mm )	A ( mm )	C ( mm )	D ( mm )	G ( mm )	H ( mm )	B ( mm )	J ( mm )
300	600 MCM	UCCT 300-MB	BLANK	23.5	30.0	43.0	22.0	23.0	42.0	102.0
		UCCT 300-10	10.5	23.5	30.0	43.0	22.0	23.0	42.0	102.0
		* UCCT 300-12 NP	13.0	23.5	30.0	<b>30.0 NP</b>	16.0	29.0	42.0	102.0
		UCCT 300-12	13.0	23.5	30.0	43.0	22.0	23.0	42.0	102.0
		UCCT 300-16	17.0	23.5	30.0	43.0	22.0	23.0	42.0	102.0
		UCCT 300-20	21.0	23.5	30.0	43.0	22.0	23.0	42.0	102.0
400	750 MCM	UCCT 400-MB	BLANK	27.5	35.6	50.1	26.0	26.0	44.0	114.0
		UCCT 400-12	13.0	27.5	35.6	50.1	26.0	26.0	44.0	114.0
		UCCT 400-16	17.0	27.5	35.6	50.1	26.0	26.0	44.0	114.0
		UCCT 400-20	21.0	27.5	35.6	50.1	26.0	26.0	44.0	114.0
500	1000 MCM	UCCT 500-MB	BLANK	30.0	39.0	56.0	27.0	27.0	48.0	121.0
		UCCT 500-16	17.0	30.0	39.0	56.0	27.0	27.0	50.0	121.0
		UCCT 500-20	21.0	30.0	39.0	56.0	27.0	27.0	50.0	121.0
* 630	1200 MCM	* UCCT 630-MB	BLANK	35.0	45.0	63.8	32.0	32.0	60.0	144.0
		* UCCT 630-16	17.0	35.0	45.0	63.8	32.0	32.0	60.0	144.0
* 800	1500 MCM	* UCCT 800-MB	BLANK	39.0	50.6	72.0	35.0	35.0	78.0	170.0
		* UCCT 800-16	17.0	39.0	50.6	72.0	35.0	35.0	78.0	170.0
* 1000	2000 MCM	* UCCT 1000-MB	BLANK	43.0	56.2	78.5	42.5	42.5	90.0	200.0

Tolerance on dimensions are as per UL FUS.

\* Not UL Listed.