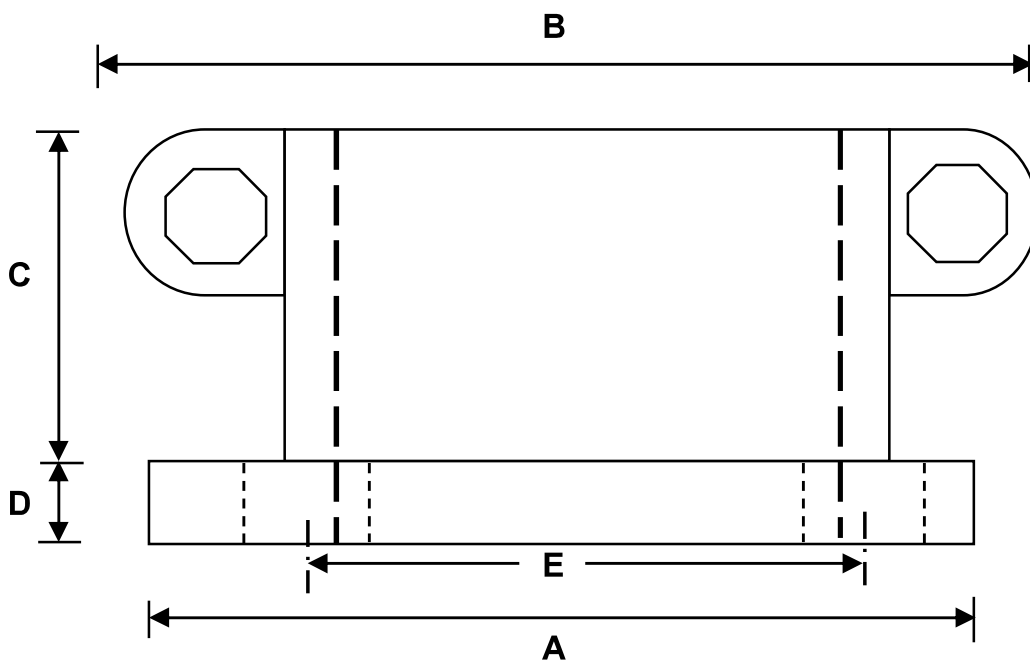


# HT 4 Hole Gland

## Die Cast Gland



The Gland is cast from Aluminium Alloy to BS 1490  
Gland come with 2 M10 bolt with 4 by M10 mounting hole

Diameter	A	B	C	D	E
40-50	100	140	65	10	75
50-60	110	150	65	10	80
60-70	118	160	65	10	90
70-80	118	168	65	10	90
80-90	128	175	65	10	100
90-100	136	183	65	10	109
100-110	144	195	65	10	118