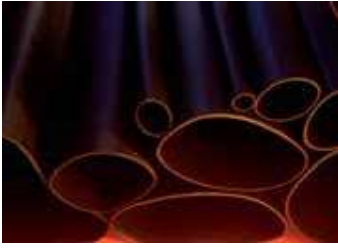


## Low Voltage Cable Accessories

**MWTM****Heat-shrinkable medium wall insulation tubing****General Description**

Raychem heat shrinkable medium wall tubing for use in re-jacketing cable joint, cable jacket, repairs and core protection in terminations.

**Features & Benefits**

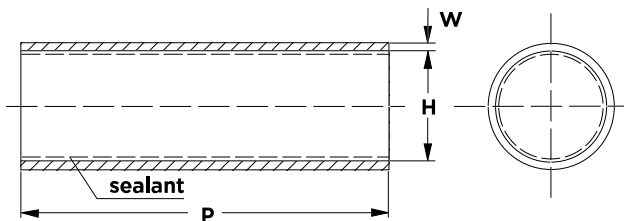
High shrink ratio enables perfect fit on a wide range of cables. Hot melt sealant provides an excellent moisture seal. High mechanical strength enables immediate back feeling.

## Selection Information: dimensions shown in millimeters

Material properties		Test method	Material requirements
Tensile strength		ISO 37	14 MPa min.
Ultimate elongation		ISO 37	350 % min.
Density		ISO 1183 Method A	0.9 – 1.1 g/cm <sup>3</sup>
Hardness		ISO 868	50 shore D
Accelerated ageing	7 days at 150°C ± 2°C	ISO 188	
	Tensile strength	ISO 37	14 MPa min.
	Ultimate elongation	ISO 37	300 % min.
Thermal endurance*		IEC 60216	120°C min.
Low temperature flexibility	4 hrs at -40°C ± 3°C	ASTM D 2671 Procedure C	No cracking
Dielectric strength	1 mm wall	IEC 60243	200 kV/cm
Volume resistivity		IEC 60093	1 x 10 <sup>12</sup> Ω cm min.
Water absorption		ISO 62 Method 1	0.25 % max after 14 days at 23°C ± 2°C
Resistance to liquids	7 days in transformer oil VDE 0370 at 23°C ± 2°C	ISO 1817	
	Tensile strength	ISO 37	14 MPa min.
	Ultimate elongation	ISO 37	300 % min.
Weathering		The material from which MWTM tubing is manufactured contains carbon black to protect it from ultra-violet light.	
Additional properties		Further details are given in Raychem specification PPS 3010/19 (A) [1326].	

\* based on ultimate elongation

**Dimensions**



**Notes:**

- 1. Dimensions in millimeters  
a = as supplied  
b = after free recovery
- 2. Max. longitudinal change after free recovery:  
+5% / -10%

Raychem MWTM is supplied complete with installation instructions.

Product Size	Application range		H		W	
	from mm	to mm	a min	b max	a nom	b min
MWTM 10/3	3.5	9.0	10	3	0.3	1.0
MWTM 16/5	5.5	14.5	16	5	0.3	1.4
MWTM 25/8	9.0	22.5	25	8	0.4	2.0
MWTM 35/12	13.0	31.5	35	12	0.4	2.0
MWTM 50/16	18	45	50	16	0.5	2.0
MWTM 63/19	21	57	63	19	0.6	2.4
MWTM 75/22	24	68	75	22	0.6	2.7
MWTM 85/25	28	77	85	25	0.6	2.8
MWTM 95/29	32	86	95	29	0.7	3.1
MWTM 115/34	37	104	115	34	0.7	3.1
MWTM 140/42	46	126	140	42	0.7	3.1
MWTM 160/50	55	144	160	50	0.7	3.2
MWTM 180/60	66	162	180	60	0.7	3.2
MWTM 245/80 *	88	220	245	80	n.a.	2.4
MWTM 285/135 *	149	255	285	135	n.a.	1.4

\* uncoated only

**Standard lengths and coatings**

**Lengths**

All sizes types are available in the standard lengths: 1000 mm and 1500 mm.

Spools and other lengths on request. All lengths subject to standard cutting tolerances.

**Coatings**

Raychem MWTM is available with or without an inner sealant wall. The sealant exhibits excellent bonding and sealing characteristics to all materials commonly used in the various cable insulation and sheath constructions, such as plastic, rubber, lead and aluminium.

Sealant /S (equivalent /243 and S1323) meets Raychem specification PPS 3012/76

**Ordering example**

**Part number**  
**MWTM 25/8-1000/S**

Product type \_\_\_\_\_  
 Size \_\_\_\_\_  
 Standard length \_\_\_\_\_  
 /S = sealant \_\_\_\_\_  
 /U = without sealant \_\_\_\_\_